



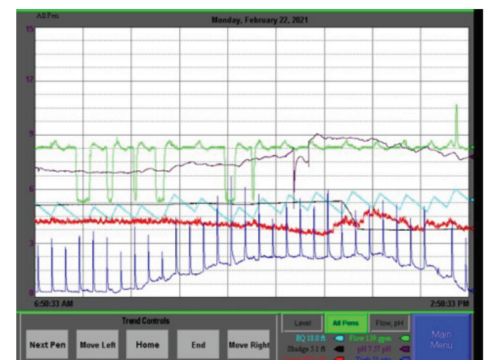
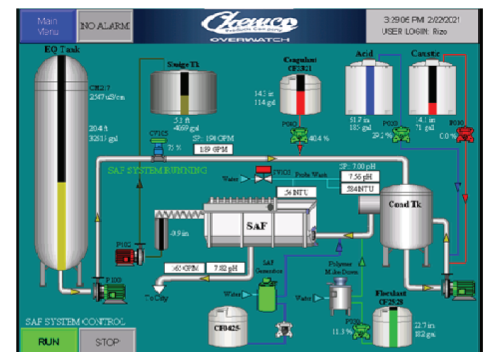
CHEMCO OVERWATCH

OVERWATCH WW (WASTEWATER)

Overwatch WW is a PLC-based control system, customized to monitor and control all aspects of a wastewater treatment system with the following goals in mind:

CAPABILITIES & BENEFITS

- Custom interface makes it very intuitive for wastewater personnel to operate.
- Ability to utilize any number of sensors (process tank level/chemical tank level, pH, ORP, TSS, flow rates, temperature, conductivity, etc.) throughout the treatment plant.
- Implement custom control algorithms to optimize process outcomes (i.e., optimize chemical dosages in a DAF operation to achieve required solids removal rates, optimize DAF float characteristics to minimize moisture content, and reduce hauling costs, etc.).
- Ability to remotely monitor AND control the system from anywhere.
- Set up effective system alarms (eliminating noise), allowing operators to respond to upsets expediently.
- Ability to store data and pull up trends to effectively monitor and troubleshoot a system's performance.
- Improve the rate of compliance with WWTP, reducing chances of NOV, fines, and/or high surcharges.
- Integration with third-party controllers (existing or new) for turnkey solutions.



Flow Setpoint		Baseline Dosing		SAF Sludge Pump	
EQ Lvl > 25 ft	233 gpm	Flocculant (PPM)	40.00	On SP	20 in
20 ft > Lvl > 25 ft	190 gpm	Coagulant (PPM)	275.0	Off SP	1 in
15 ft > Lvl > 20 ft	140 gpm				
2 ft > Lvl > 15 ft	90 gpm				
		pH Setpoint	7.00	Probe Wash	Interval 900 sec
		Cond Tx		Duration	15 sec
		pH Adjust	3 sec		
		Adjust Factor			
		Acid	90.00		
		Caustic	100.0		

Include the **Accu-Spense IMS** unit which is a microprocessor-controlled allocation system that records critical chemical usage data for Sanitation Program Control and Inventory Control purposes.

