



CHEMCO OVERWATCH

ACCU-FILL SYSTEM

Overwatch Accu-FILL System safely maintains chemical levels in mini bulk tanks. It can be operated manually with a push button to fill, or by a PLC-controlled filling system using level sensors and flow meters. Time relays and chemical level control provide dual safety protection and ensure chemicals are transported without overfilling the receiving tank. The less expensive push-button system – Accu-FILL PB – requires manual activation of the system to begin transfer of product from a movable drum or IBC tote into a stationary tank. The PLC-controlled system – Accu-FILL MP – automatically fills a point of use tank from a bulk tank. Radar level sensors activate valves and pumps to maintain a set level in the point of use tank. It also utilizes automatic shut-off if the high-level relay fails. Accu-FILL MP records and time stamps the amount of transferred product. Historical data is captured to show when and how much chemicals have been transferred.

CAPABILITIES & BENEFITS

EASE OF OPERATION

The Accu-FILL MP System Bilingual Touch Screen HMI is easy to use and navigate with detailed illustration and graphics. Operator use is intuitive, and instructions are explained on the screen.

OPERATOR SAFETY

The Accu-FILL MP System limits exposure to chemical concentrate spills and splashes by dispensing directly from the stationary bulk container into a mini bulk point of use tank.

ENVIRONMENTAL SAFETY

The Accu-FILL MP System eliminates the need for drum pumps that can splash or leak chemical concentrates onto the ground.

USE CONTROL

Using site-specific formulas, the Accu-FILL MP System dispenses the proper amount of chemical concentrate to maintain a point of use tank.

COST CONTROL

The Accu-FILL MP System tracks the amount of chemical used in any given time period.

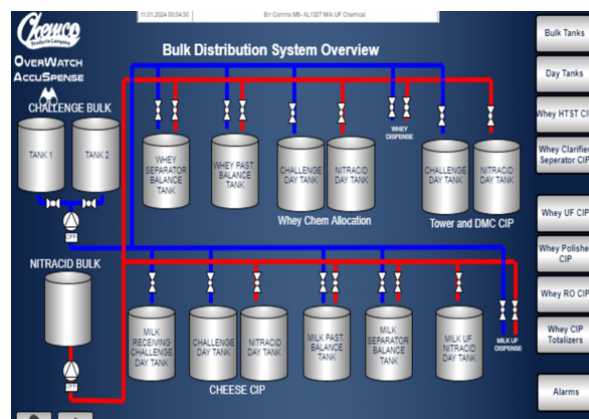
ACCURACY

The Accu-FILL MP sends a feedback signal to the control unit telling the PLC exactly how much chemical concentrate has been pumped and gives real time feedback of tank levels.

MANAGEMENT OVERSIGHT

The Accu-FILL MP System provides reports to track chemical use, cost, and inventory control.

ABILITY TO REMOTELY MONITOR AND CONTROL THE SYSTEM FROM ANYWHERE.



Include the **Accu-Spense IMS** unit which is a microprocessor-controlled allocation system that records critical chemical usage data for Sanitation Program Control and Inventory Control purposes.