



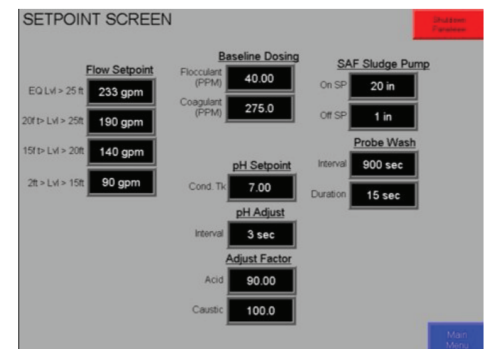
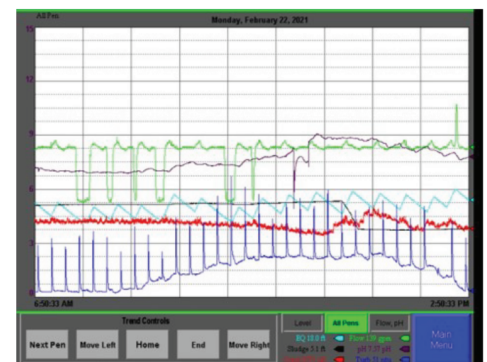
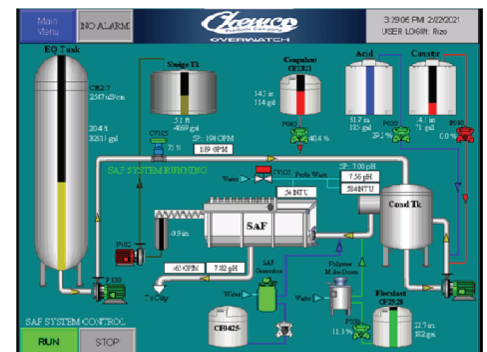
CHEMCO OVERWATCH

OVERWATCH WW (WASTEWATER)

Overwatch WW is a microprocessor-based control system that can be customized to monitor and control all aspects of a client's wastewater treatment system with the following goals in mind:

CAPABILITIES & BENEFITS

- Custom interface making it very intuitive for wastewater personnel to operate.
- Ability to utilize any number of sensors (process tank level/chemical tank level, pH, ORP, TSS, flow rates, temperature, conductivity, etc.) throughout the treatment plant.
- Implement custom control algorithms to optimize process outcomes (i.e., optimize chemical dosages in a DAF operation to achieve required solids removal rates, optimize DAF float characteristics to minimize moisture content, and reduce hauling costs, etc.).
- Ability to remotely monitor AND control the system from anywhere.
- Set up effective system alarms (eliminating noise) to allow operators to respond to upsets expediently.
- Ability to store data and pull up trends easily to effectively monitor and troubleshoot a system's performance.
- Improve the rate of compliance with the WWTP, reducing chances of NOV, fines, and/or high surcharges.



Include the **Accu-Spense IMS** unit which is a microprocessor-controlled allocation system that records critical chemical usage data for Sanitation Program Control and Inventory Control purposes.