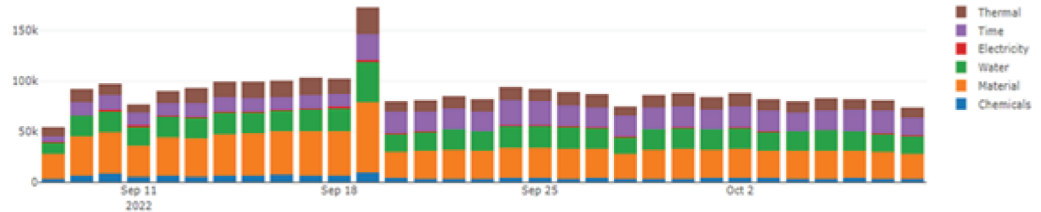




Inventory  
Barcode  
Documents  
Logout

Cost Summary



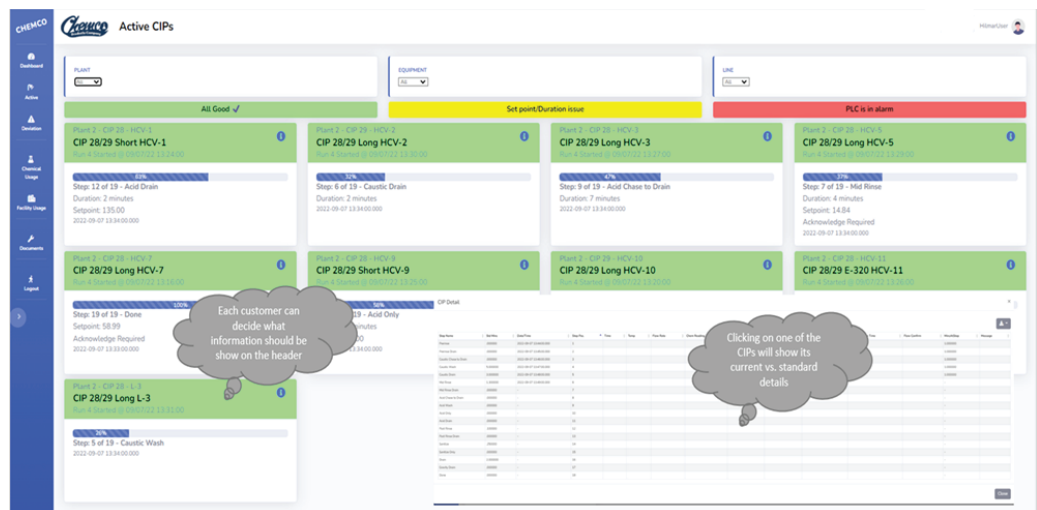
# CHEMCO OVERWATCH

## OVERWATCH QMS (QUALITY MANAGEMENT SYSTEM)

- **Overwatch QMS** (Quality Management System) receives numerous inputs and outputs to monitor CIP systems and track CIP performance based on preset parameters. Notifications via text or email relay severe performance deviations so that critical data regarding the quality and cost for each wash is at your fingertips.
- Improve product quality through QMS's ability to identify and notify key individuals of problems and deficiencies in every wash it monitors.
- Reduce downtime by sending emails and text messages that prompt key plant personnel to respond to system(s) issues. These can be actual alarms and failures provided by Historian, escalated as needed if the faults are not cleared.
- Reduce operating costs by alerting operators to issues resulting in losses. Utilize KPI's to validate every wash.

## CAPABILITIES & BENEFITS

- Usernames are created to allow different roles to be assigned using two-factor authentication.
- Information filtering according to screen, plant location, and sensitive data.
- Real-time information relay shows currently active CIP data.
- Data is automatically refreshed on a regular interval.
- Immediate issues can be reported (with color-coding or specific messages) using the PLC's alarms or built-in logic (e.g., do we have temperature readings?).
- Emails and texts can be sent (and escalated) to assigned personnel based on plant, line, time in exception, etc.
- The Deviations screen highlights specific details about exceptions, variations, and compliance.
- When data is made available, QMS will report on the cost of the deviation, and note any differences in usage.
- Standard Chemical and Facility usage screens allow you to drill down further into the details of each wash.
- Interactive filters are based on each user's log in.
- Data can be exported for further analysis.
- Inventory data can be integrated from a source system or manually entered from provided screens.
- Calculations are based on each chemical's average use, safety, and delivery days with options to add further days for dock and quality days / status.
- Information can be reported in days and/or volume.
- Green = stock is good; Yellow = stock is below the re-order amount; Red = stock is below the safety stock amount.
- This can be automated to snapshot information on a regular basis for trend analysis.
- Summarized emails can be sent for issues or deviations.
- The inventory screen is used to drill down to the details behind the Days of Supply graphs.
- This screen also allows you to manually record current inventory.
- Previous entries can be viewed, and corrections made.
- Spreadsheet data can be exported for further filtering.
- The Wash History screen allows you to select a specific time period and CIP system to view in greater detail.
- A quick reference to see if a wash passed or failed.
- Cost to clean for an individual wash.



Include the **Accu-Spense IMS** unit which is a microprocessor-controlled allocation system that records critical chemical usage data for Sanitation Program Control and Inventory Control purposes.

Contact Chemco Products Company for More Information!

Tel: +1 866-243-6261

sales@chemcoprod.com

www.chemcoprod.com