



CHEMCO OVERWATCH

Accu-TROL

Accu-TROL is a microprocessor-controlled monitoring and allocation system that shows current and historical records and critical chemical usage data. **Accu-TROL** provides immediate and historical records of a single or numerous sensors that monitor conductivity/pH/ORP. **Accu-TROL** provides verification that the correct concentrations and parameters are met. The **Accu-TROL** System can have numerous pumps attached; however, it is typically designed to control a single product in a recirculation system. A water feed line is piped to the **Accu-TROL** system, and a flow control valve is manually set to achieve the desired flow through the unit. A contact flow meter will energize the system when flow is present. Then the desired monitoring sensor that provides an analog or digital output supplies data to the microprocessor. If the output is out of range, the processor will energize the product pump until the desired setpoint is achieved. A flow meter records the time/duration and amount of chemical added. The chemically treated water is returned to its source. **Accu-TROL** is programmed to accurately provide the proper chemical and amount into multiple point-of-use systems. Systems typically include Spray Washers, CIP Systems, HTST Units and COP Tanks. Typically, this unit is designed to dispense one (1) chemical. This unit can be tied into an existing HMI or run stand-alone.

CAPABILITIES & BENEFITS

EASE OF OPERATION

The Accu-TROL System Bilingual Touch Screen HMI is like ATM touch screens and is therefore familiar to most users. Operator use is intuitive, and instructions are explained on the screen.

OPERATOR SAFETY

The Accu-TROL System limits exposure to chemical concentrate spills and splashes by automatically dispensing the chemical directly from the shipping container into a point of use.

ENVIRONMENTAL SAFETY

The Accu-TROL System eliminates the need for drum pumps that can splash or leak chemical concentrates onto the ground.

USE CONTROL

Using site-specific setpoints, the Accu-TROL System dispenses the proper amount of chemical concentrate required for the cleaning SOP.

COST CONTROL

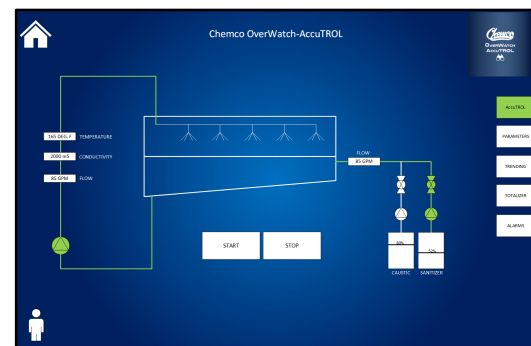
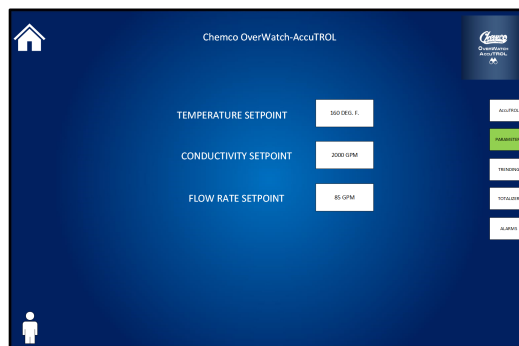
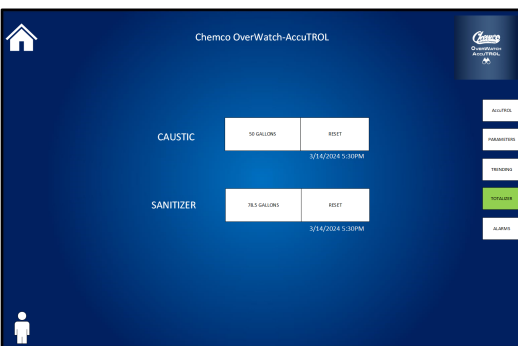
The Accu-TROL System accurately ensures that the correct amount of chemical concentrate is used.

ACCURACY

The Accu-TROL pumps and flow control units generate a feedback signal to the control unit telling the PLC exactly how much chemical concentrate has been pumped.

MANAGEMENT OVERSIGHT

The Accu-TROL System provides reports to track chemical use, cost, and inventory control.



Include the **Accu-Spense IMS** unit which is a microprocessor-controlled allocation system that records critical chemical usage data for Sanitation Program Control and Inventory Control purposes.