



# CHEMCO OVERWATCH

## ACCU-SPENSE MAS (MEMBRANE ALLOCATION SYSTEM)

**Accu-Spense MAS** unit is a microprocessor-controlled allocation system that records critical chemical usage data for Sanitation Program Control and Inventory Control. The **Accu-Spense MAS** Allocation System can have numerous pumps attached. **Accu-Spense MAS** is programmed to accurately provide the proper chemical and amount into multiple point-of-use systems. This system is designed specifically for RO/UF/MF/Nano Membrane Systems. These Systems typically require four (4) to six (6) chemical allocation pumps each. After each allocation, a water flush rinses out the chemical line feeding that individual system. This Unit can be tied into an existing HMI or run stand-alone. With additional accessories, **Accu-Spense MAS** can manage inventory control for bulk, IBC Totes, and Chemical Drums.

### CAPABILITIES & BENEFITS

#### EASE OF OPERATION

The Accu-Spense MAS System Bilingual Touch Screen HMI is like ATM touch screens and is therefore familiar to most users. Operator use is intuitive, and instructions are explained on the screen.

#### OPERATOR SAFETY

The Accu-Spense MAS system limits exposure to chemical concentrate spills and splashes by dispensing directly from the chemical containers into membrane balance tanks.

#### ENVIRONMENTAL SAFETY

The Accu-Spense MAS System eliminates the need for drum pumps that can splash or leak chemical concentrates onto the ground.

#### USE CONTROL

Using site-specific formulas, the Accu-Spense MAS System dispenses the proper amount of chemical concentrate required for any cleaning SOP.

#### COST CONTROL

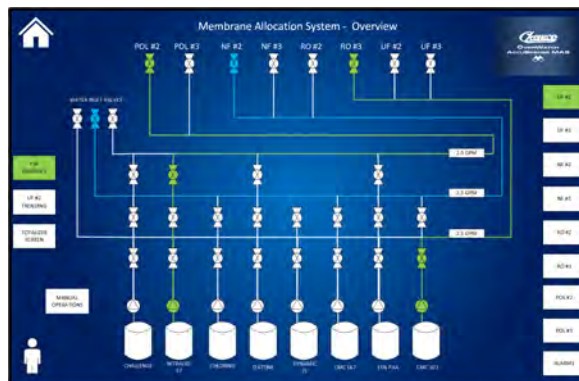
The Accu-Spense MAS System ensures the correct amount of chemical concentrate is used for every cleaning task.

#### ACCURACY

The Accu-Spense MAS sends a feedback signal to the control unit telling the PLC exactly how much chemical concentrate has been pumped.

#### MANAGEMENT OVERSIGHT

The Accu-Spense MAS System provides reports to track chemical use, cost, and inventory control.



UF #2 TOTALIZER OVERVIEW

TANK	CONCENTRATION	STATUS	DATE/TIME	SP #
CHALLENGE	800.00	OK	4/1/2024 7:30AM	SP #1
INSTRUMENT	200.00	OK	4/1/2024 7:30AM	SP #2
CHALLENGE	100.00	OK	4/1/2024 7:30AM	SP #3
CHALLENGE	100.00	OK	4/1/2024 7:30AM	SP #4
CHALLENGE	100.00	OK	4/1/2024 7:30AM	SP #5
CHALLENGE	100.00	OK	4/1/2024 7:30AM	SP #6
CHALLENGE	100.00	OK	4/1/2024 7:30AM	SP #7
CHALLENGE	100.00	OK	4/1/2024 7:30AM	SP #8
CHALLENGE	100.00	OK	4/1/2024 7:30AM	SP #9
CHALLENGE	100.00	OK	4/1/2024 7:30AM	SP #10



Include the **Accu-Spense IMS** unit which is a microprocessor-controlled allocation system that records critical chemical usage data for Sanitation Program Control and Inventory Control purposes.