

CHEMCO OVERWATCH

ACCU-SPENSE IMS (INVENTORY MANAGEMENT SYSTEM)

Accu-Spense IMS unit is a microprocessor-controlled allocation system that records critical chemical usage data for Sanitation Program Control and Inventory Control purposes. The **Accu-Spense** allocation system can have numerous pumps attached. Typically, most units require two (2) to six (6) chemical allocation pumps. After each allocation, a water flush rinses out the common chemical line to the container, drain or into a foam unit. This system can be programmed to dispense concentrated chemicals into a container or dilute water and chemicals into a foam unit.

CAPABILITIES & BENEFITS

EASE OF OPERATION

The Accu-Spense IMS System Bilingual Touch Screen HMI is like ATM touch screens and is therefore familiar to most users. Operator use is intuitive, and instructions are explained on the screen.

OPERATOR SAFETY

The Accu-Spense IMS System limits exposure to chemical concentrate spills and splashes by dispensing directly from the shipping container into a jerrican or other closed container for transport to the use point in the plant.

ENVIRONMENTAL SAFETY

The Accu-Spense IMS System eliminates the need for drum pumps that can splash or leak chemical concentrates onto the ground.

USE CONTROL

Using site-specific formulas, the Accu-Spense IMS System dispenses the proper amount of chemical concentrate required for any cleaning SOP.

COST CONTROL

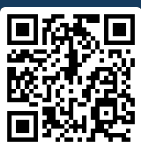
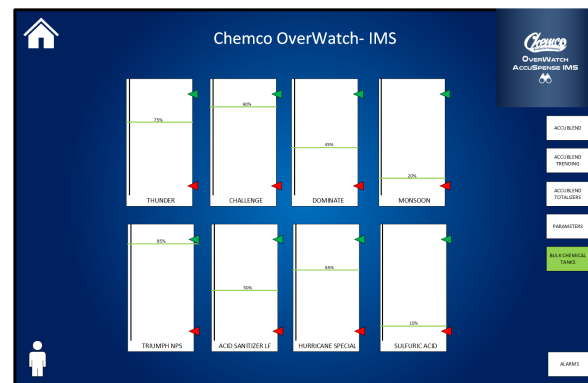
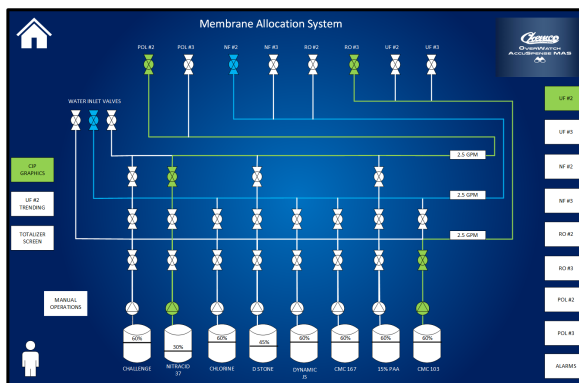
The Accu-Spense IMS System ensures the correct amount of chemical concentrate is used for every cleaning task.

ACCURACY

The Accu-Spense IMS sends a feedback signal to the control unit telling the PLC exactly how much chemical concentrate has been pumped.

MANAGEMENT OVERSIGHT

The Accu-Spense IMS System provides reports to track chemical use, cost, and inventory control.



Contact Chemco Products Company for More Information!

Tel: +1 866-243-6261

sales@chemcoprod.com

www.chemcoprod.com