



CHEMCO OVERWATCH

ACCU-SPENSE AS (ALLOCATION SYSTEM)

Accu-Spense AS unit is a microprocessor-controlled allocation system that records critical chemical usage data for Sanitation Program Control and Inventory Control. **Accu-Spense AS** is programmed to accurately provide the proper chemical and amount into multiple point-of-use systems. Systems typically include CIP Systems, HTST Units, and COP Tanks. Numerous pumps may be attached to the unit. Most units require two (2) to six (6) chemical allocation pumps. After each allocation, a water flush rinses out the common chemical line to the unit. The unit can be tied into an existing HMI or run stand-alone. With additional accessories, **Accu-Spense AS** can manage inventory control for bulk, IBC Totes, and Chemical Drums.

CAPABILITIES & BENEFITS

EASE OF OPERATION

The Accu-Spense AS System Bilingual Touch Screen HMI is like ATM touch screens and is therefore familiar to most users. Operator use is intuitive, and instructions are explained on the screen.

OPERATOR SAFETY

The Accu-Spense AS System limits exposure to chemical concentrate spills and splashes by dispensing directly from the shipping container into a jerrican or other closed container for transport to the use point in the plant.

ENVIRONMENTAL SAFETY

The Accu-Spense AS System eliminates the need for drum pumps that can splash or leak chemical concentrates onto the ground.

USE CONTROL

Using site-specific formulas, the Accu-Spense AS System dispenses the proper amount of chemical concentrate required for any cleaning SOP.

COST CONTROL

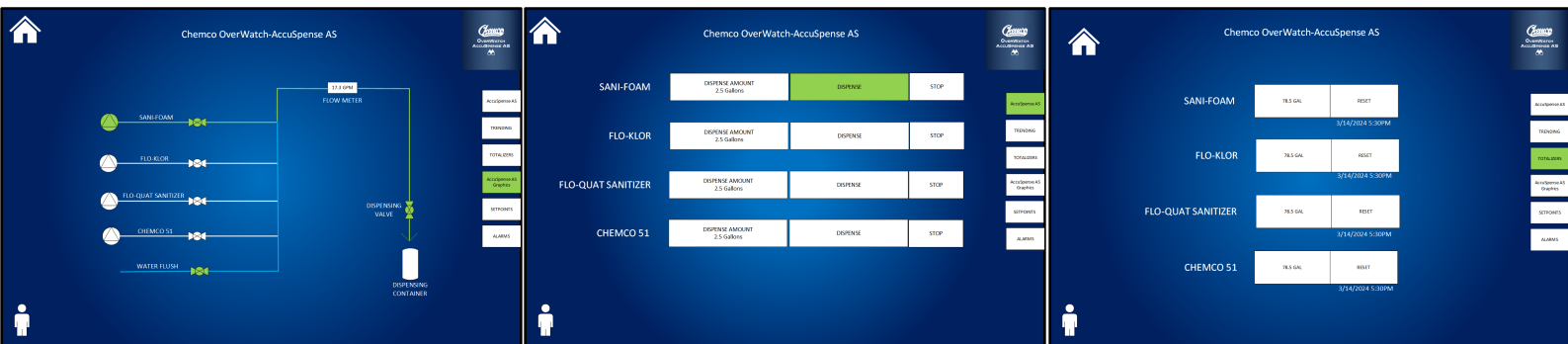
The Accu-Spense AS System ensures the correct amount of chemical concentrate is used for every cleaning task.

ACCURACY

The Accu-Spense AS sends a feedback signal to the control unit telling the PLC exactly how much chemical concentrate has been pumped.

MANAGEMENT OVERSIGHT

The Accu-Spense AS System provides reports to track chemical use, cost, and inventory control.



Include the **Accu-Spense IMS** unit which is a microprocessor-controlled allocation system that records critical chemical usage data for Sanitation Program Control and Inventory Control purposes.